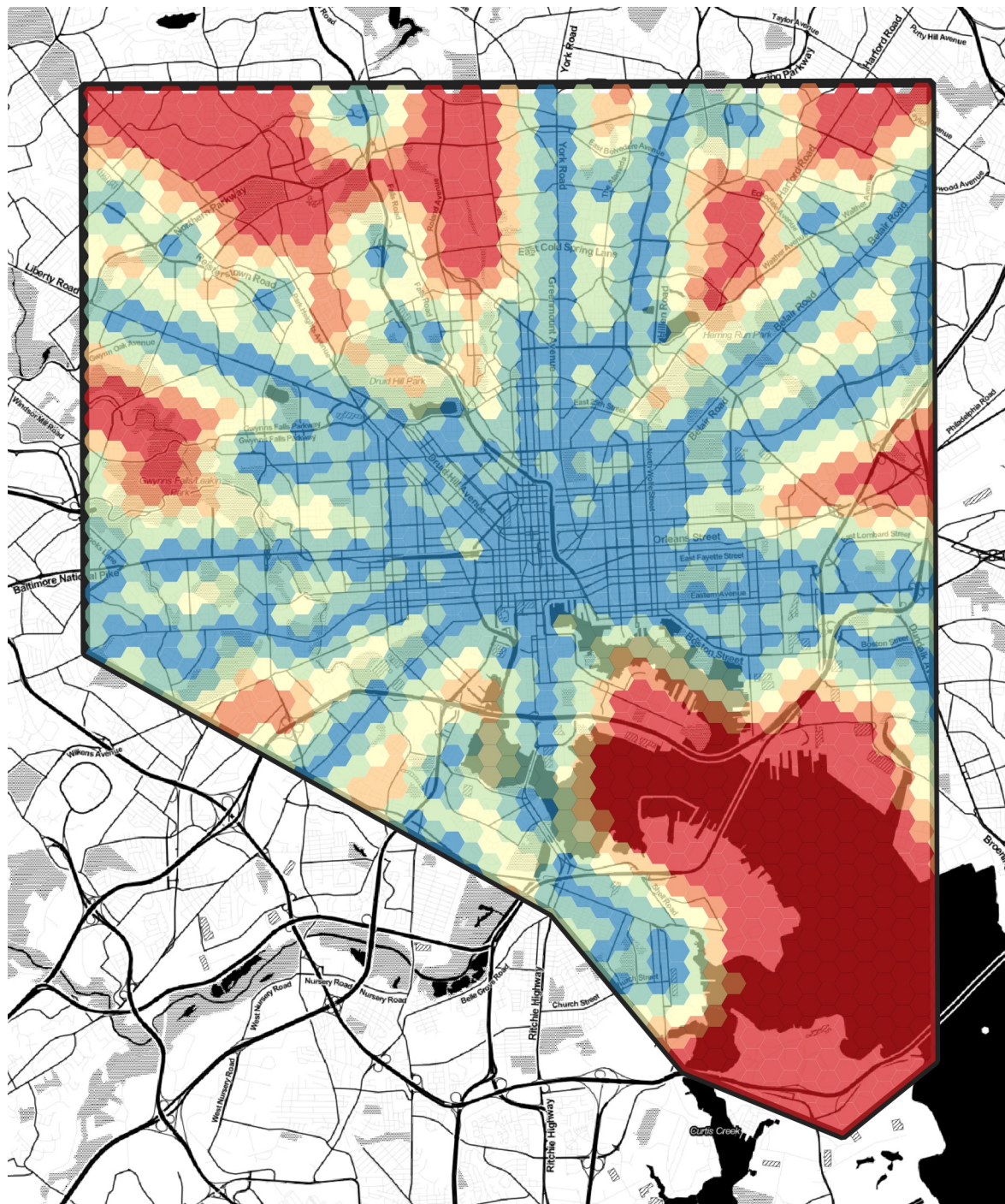
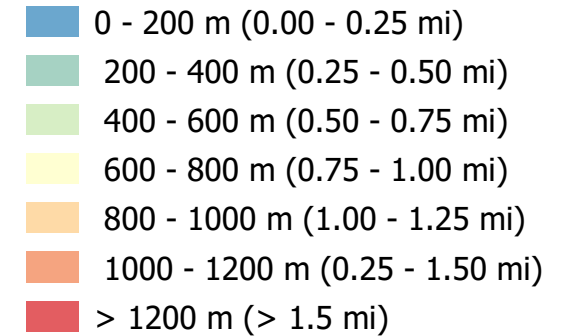


Distant to Frequent Transit in Baltimore



Distance to Nearest Frequent Transit



Frequent transit is defined here as Baltimore Metro Subway, Baltimore Light Rail, and the twelve Baltimore CityLink bus routes.

Note that the Baltimore LocalLink bus routes 22, 26, 30, 54, 80, and 85 are not included, although the MTA considers them to be frequent, and that the half-frequency tails of certain CityLink bus routes are included, along with Light Rail stations that receive relatively infrequent service.

Stop location data is from the Maryland Open Data portal, <https://data.maryland.gov/>

Background map is Stamen Toner.

Created by DW Rowlands, 8 October 2018.